



The Seaforth Modified 04

3-4 Bedroom*

Another stunning design from Classic ...

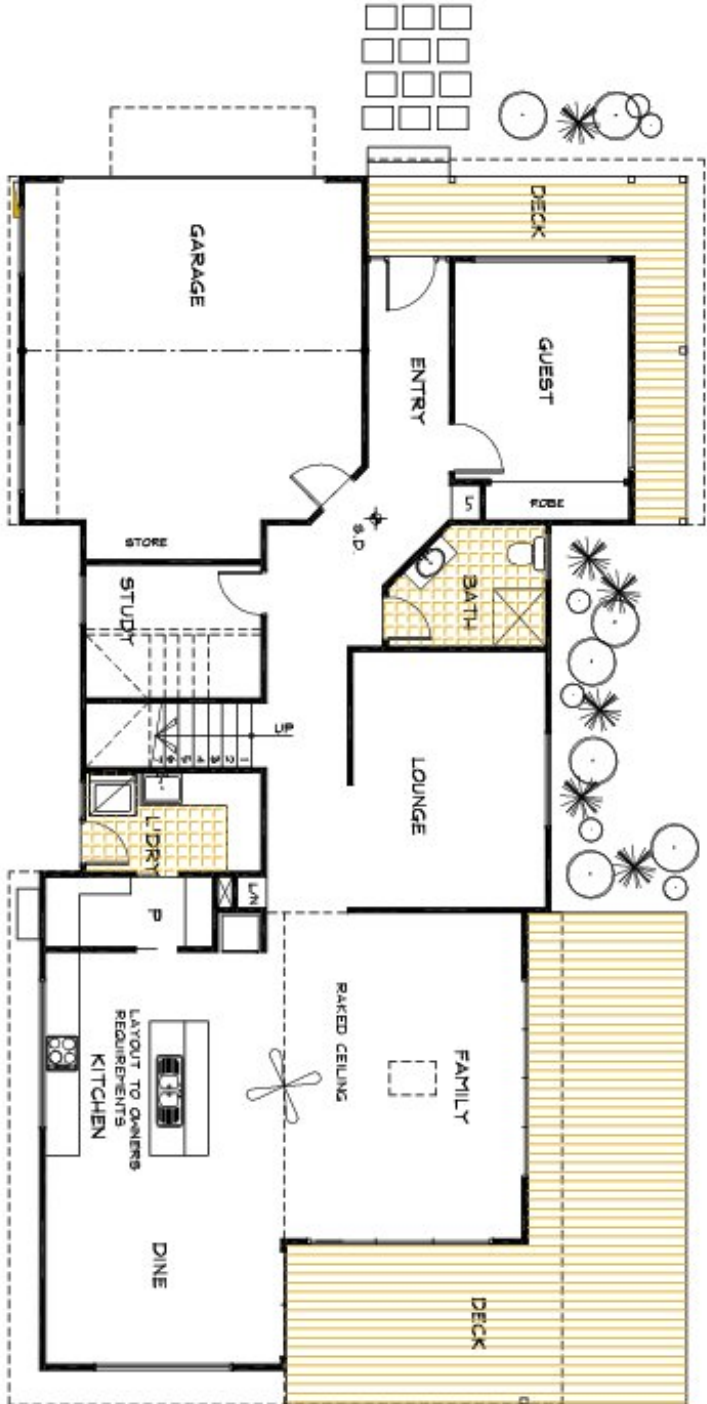
Another stunning design from Classic

This home could quite easily be suitable for a coastal location or a sprawling country outlook. As with all of Classic's homes, the Seaforth Modified includes flexibility and design, and has produced an outstanding result.

Extra-wide hallways and entry are stand-out features of this magnificent residence. Exceptionally large, open living areas with high, flat and cathedral ceilings complement a double-glazed skylight, enhancing the appearance of the home and achieving a high level of natural light and warmth. Every space in the home was thought about and used carefully.



**The floorplans shown demonstrate some of the options available in terms of layout, possible size, possible number of rooms, decks and more. They are a guide, and are meant to provide you with ideas and show you possibilities. Any of the basic designs can be customised to suit any of your requirements.*



*PLEASE NOTE ROOM DIMENSIONS ARE NOT DISPLAYED AS WE CUSTOMISE THE HOME TO SUIT YOUR REQUIREMENTS

GROUND FLOOR PLAN
 © CLASSIC BUILDING & DESIGN

SEAFORTH MODIFIED 04

© This drawing and design remain the property of CLASSIC BUILDING & DESIGN and may not be copied in whole or in part without prior approval of CLASSIC BUILDING & DESIGN



* PLEASE NOTE ROOM DIMENSIONS ARE NOT DISPLAYED AS WE CUSTOMISE THE HOME TO SUIT YOUR REQUIREMENTS

FIRST FLOOR PLAN

© CLASSIC BUILDING & DESIGN

SEAFORTH MODIFIED 04

© This drawing and design remain the property of CLASSIC BUILDING & DESIGN and may not be copied or altered without their prior approval or written consent.