



## The Woodcutter's Elbow

3-4 bedroom 2 bathroom 1-2 Living\*

This classic Australian design features three bedrooms & two living areas with large deck areas. Four bedroom options are also available.

**This magnificent classic Australian single-storey home is practical, versatile and comfortable.**

This classic Australian home draws its inspiration from the old sheep station homesteads, but has the modern conveniences and open-plan living of today's finest residences.

The magnificent single-storey home is practical, versatile and comfortable, and is ideal for acreages or wide frontage sites. It offers plenty of storage and space, with four bedrooms, a master with Ensuite and walk-in robe and an open-plan kitchen, living and dining area. Cathedral ceilings in the living section with the option of featured dressed timber rafters and pine lining. And as with all of Classic's designs has the option of timber windows and doors. Huge covered hardwood decks are an impressive feature of the home and can be accessed from the master bedroom, living and dining areas.

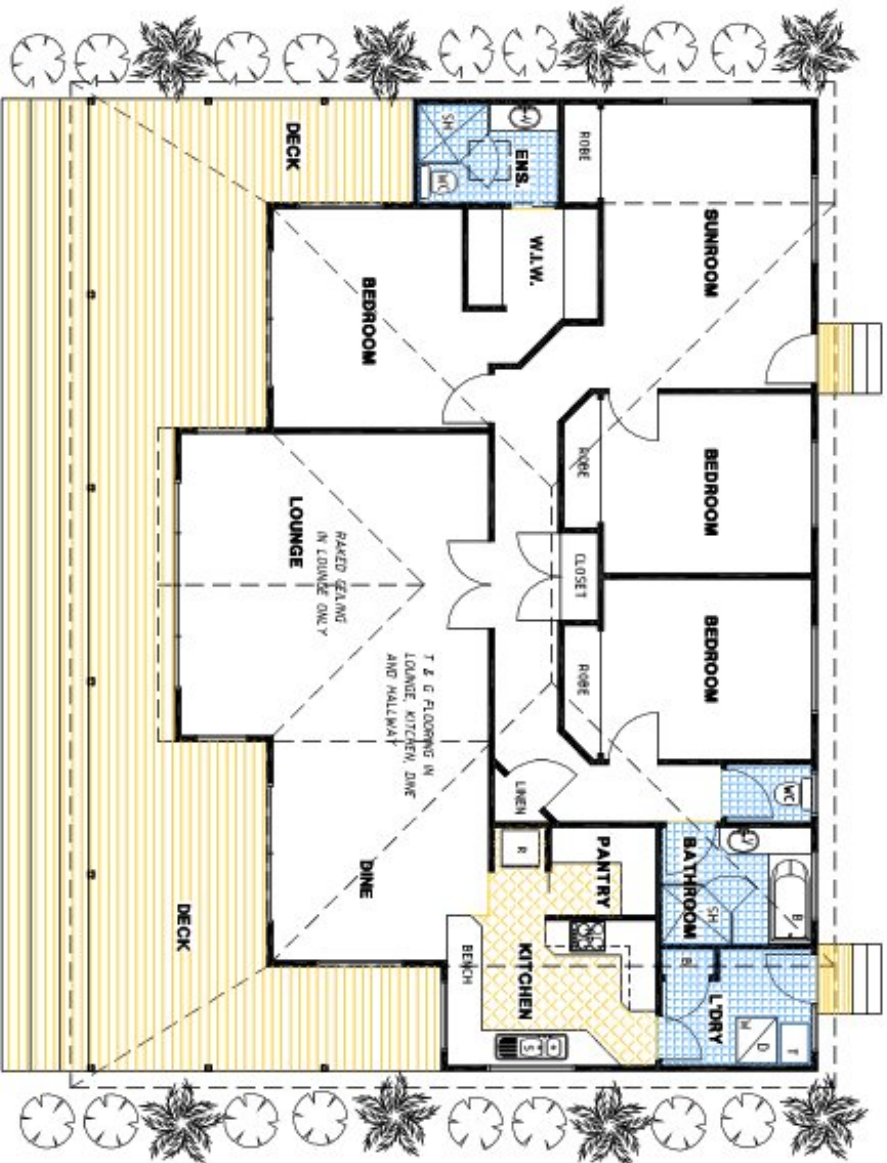


*\*The floorplans shown demonstrate some of the options available in terms of layout, possible size, possible number of rooms, decks and more. They are a guide, and are meant to provide you with ideas and show you possibilities. Any of the basic designs can be customised to suit any of your requirements.*

# THE WOODCUTTER'S ELBOW

## GROUND FLOOR PLAN © CLASSIC BUILDING & DESIGN

\*PLEASE NOTE ROOM DIMENSIONS ARE NOT DISPLAYED AS WE CUSTOMISE THE HOME TO SUIT YOUR REQUIREMENTS



© This drawing and design remains the property of CLASSIC BUILDING & DESIGN and may not be copied, altered, or used in any form without prior approval of CLASSIC BUILDING & DESIGN.