

1300 761 454

39 Gavenlock Rd, Tuggerah 2259

Info@classicbuilding.com.au

The Freshwater

The Freshwater

4 Bedroom, 2 Living, 2 Bathroom*

This Contemporary custom Beach home design features four bedrooms, two living areas and large deck areas.

The Freshwater was designed using our experience with innovative design and materials.

Materials include a lower floor made from Limestone quarried in Western Australia, combined with shiplap cladding and rendered blueboard. Generous use of naturally oiled cedar, including unique strip balustrading, lined gables, windows and garage doors completes the external, very 'Noosa', appearance.

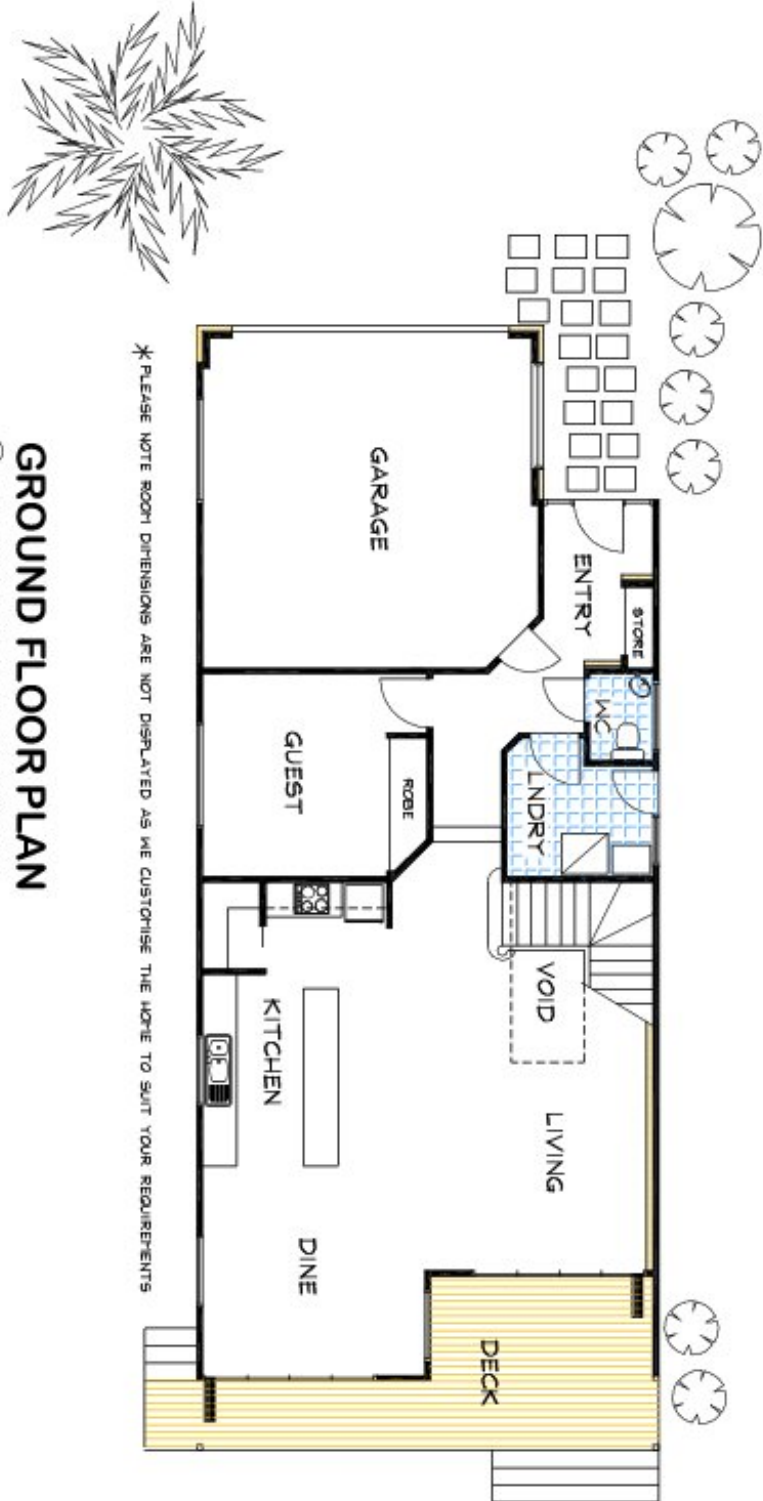
The Freshwater combines an authentic beachhouse feeling - importantly it does this within the confines of a narrow 10 metre width block. Typically a narrow block is very restrictive and clearly the Freshwater triumphs over this very typical beachside suburb constriction.

Internally the home will take your breath away. The first thing you will notice is the abundance of open space and a complete (and delightful) informality.

Large 2.4m high stacking doors bring the outside in from the generous hardwood decks. Limestone feature walls with flush mounted screens, polished hardwood floors, stone kitchens and vanities, cedar pitched ceilings, open ensuites and dual living areas are only some of the numerous luxuries that make this home so special.

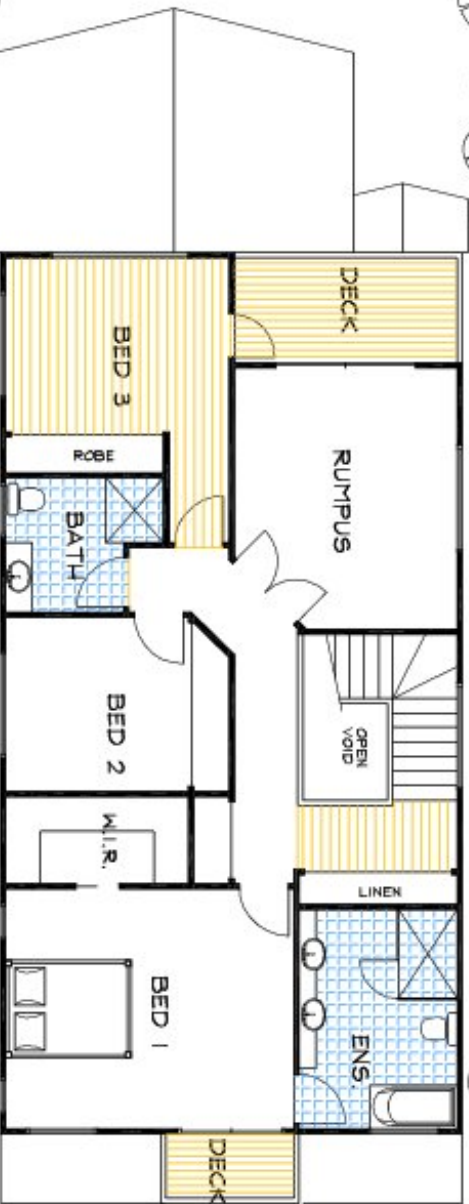
Little additions like dual heads in the shower and motion activated lights that come on in laundries, bathrooms, robes etc, are truly the icing on the cake! The Freshwater - an unpretentious beach home that still drips with 21st century luxury living.

**The floorplans shown demonstrate some of the options available in terms of layout, possible size, possible number of rooms, decks and more. They are a guide, and are meant to provide you with ideas and show you possibilities. Any of the basic designs can be customised to suit any of your requirements.*



THE
FRESHWATER

© This drawing and design remain the property of CLASSIC BUILDING & DESIGN and may not be copied in whole or in part without prior approval of CLASSIC BUILDING & DESIGN



*PLEASE NOTE ROOM DIMENSIONS ARE NOT DISPLAYED AS WE CUSTOMISE THE HOME TO SUIT YOUR REQUIREMENTS

FIRST FLOOR PLAN
 © CLASSIC BUILDING & DESIGN

THE **FRESHWATER**

© This drawing and design remain the property of Classic Building & Design and are not to be copied, reproduced or used in any way without the express written approval of Classic Building & Design.