

# Classically designed for you.



Visit our website & download brochure, floor plans & pricelists



**Alter our Existing Designs**  
**Have us design & Build your custom dream home**

## Look over our beach houses

All our designs can be altered or expanded to suit your needs or your budget, or we will design your home to incorporate your individual requirements and complement your land.

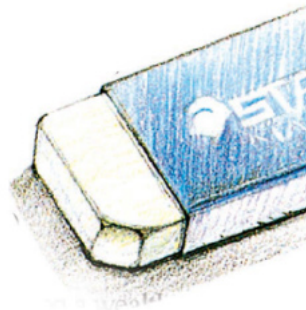
**Homes of distinction, handcrafted with pride from "Classic Country Cottages".**

CLASSIC  
COUNTRY  
COTTAGES

Classic Country Cottages (NSW): (02)4352 1189 Lot 982, Chandlers Lane, Yarramalong, NSW 2256  
Classic Country Cottages (Victoria): (03) 9787 2985 9 Humphries Rd, Frankston, VIC 3199

[www.classiccountrycottages.com](http://www.classiccountrycottages.com)

Builders Licence 90663c





Classic Country Cottages offers a range of cottages, romantic timber homes, beach houses and other special designs which can be built to suit your own budget, ideas and taste.

Classic Country Cottages can help you work on various designs for your new home, or you can leave it all up to them. It may be you wish to recapture the atmosphere of a special holiday destination — a tropical Fijian resort or a Balinese bungalow — or hold true to a traditional, handcrafted home design, albeit one that includes today’s modern conveniences.

A complete design service is available, as well as its standard range of homes. Staff members work with clients to modify designs so they take into account the specifics of the site, any slopes and family size.

Founded on a wealth of experience in the building industry, Classic Country Cottages developed its home designs after considering the needs and preferences of previous clients.

A seven-year guarantee is offered on all homes and a variety of building stages are available for purchase, from lock-up to semi lock-up, from completion to semi-completion.



## CLASSIC COUNTRY-STYLE COMFORT

Creating beautiful timber homes that ooze charm and warmth is what Classic Country Cottages does best





### The Modified Beechwood

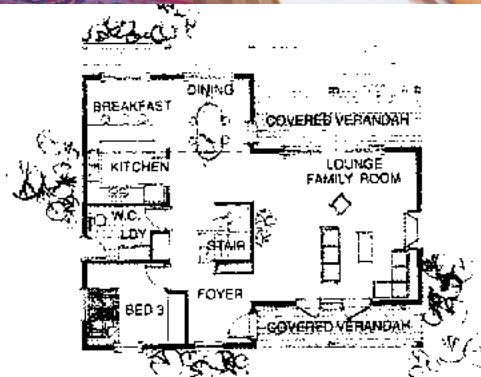
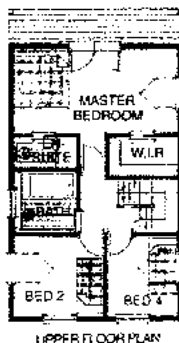
With a little imagination, you can modify the Beechwood to create your personal dream home.

This beautiful home features a classic cedar exterior, mint-green interior walls, dark-stained timber dado rails plus hardwood mouldings and picture rails, all of which give the interior a turn-of-the-century feel while still maintaining the large open-plan living areas.

The Beechwood features four bedrooms, bathroom and ensuite and a large open-plan kitchen, living and dining area. The exposed, extra-wide maple staircase allows anyone upstairs to take in the view through the cathedral ceilings or picture windows. Double-size dormer windows with hardwood double-hung windows and massive four-panel hardwood sliding doors attract attention, as do the stunning full-length 'comfort tone' glass windows at the gable end of the home, which capture views and northern light, as in the home featured.

Mixed hardwood has been used for the flooring and decks, while dado rails feature throughout.

**Price:** Refer to the current pricing guide on the website.





## Woodcutter's Elbow

This classic Australian home draws its inspiration from the old sheep station homesteads but has the modern conveniences and open-plan living of today's finest residences.

The magnificent single-storey home is practical, versatile and comfortable and is ideal for acreages or wide-frontage sites.

It offers plenty of storage and space, with four bedrooms, a master with ensuite and walk-in robe, an open-plan kitchen and a living and dining area.

Cathedral ceilings in the living section feature dressed oregon rafters and pine lining. The home has hardwood windows and door sliders, which can be upgraded to French doors, as in the home featured.

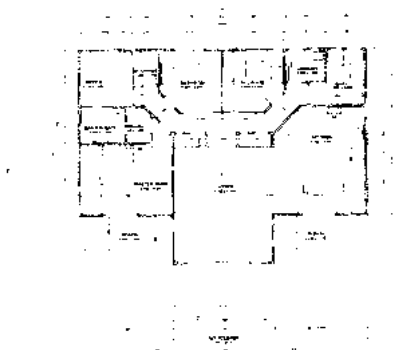
Huge covered decks are an impressive feature of the home and can be accessed

from the master bedroom, living and dining areas. The decking is made from 15-centimetre mixed hardwood planks.

The roof is fully insulated Colorbond steel and the exterior can be finished with a number of different claddings, including 'convict wash' brick veneer, or Hardie's Heritage range.

Interior finishes can be upgraded to tongue-and-groove flooring or 15-centimetre hardwood planks to match the deck. Architrave and skirting are Colonial Mould hardwood and the doors are finished with antique brass furniture.

The size of the home, roof pitches and deck areas are all easily modified to suit. **Price:** Refer to the current pricing guide on the website.



## DETAILS

### CLASSIC COUNTRY COTTAGES

Phone: (02) 4352 1189

Fax: (02) 4352 1198

Website:

[www.classiccountrycottages.com.au](http://www.classiccountrycottages.com.au)

Beach houses and special designs

now available at Classic

Country Cottages.

