

Classically designed for you.



Visit our website & download brochure, floor plans & pricelists



Alter our Existing Designs
Have us design & Build your custom dream home

Look over our beach houses

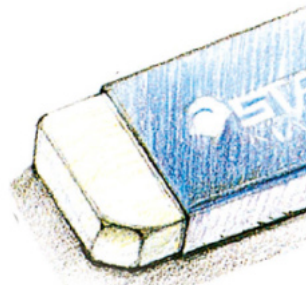
All our designs can be altered or expanded to suit your needs or your budget, or we will design your home to incorporate your individual requirements and complement your land.

Homes of distinction, handcrafted with pride from "Classic Country Cottages".

CLASSIC
COUNTRY
COTTAGES

Classic Country Cottages (NSW): (02)4352 1189 Lot 982, Chandlers Lane, Yarramalong, NSW 2256
Classic Country Cottages (Victoria): (03) 9787 2985 9 Humphries Rd, Frankston, VIC 3199

www.classiccountrycottages.com



Builders Licence 90663c

CLASSIC COUNTRY COTTAGES

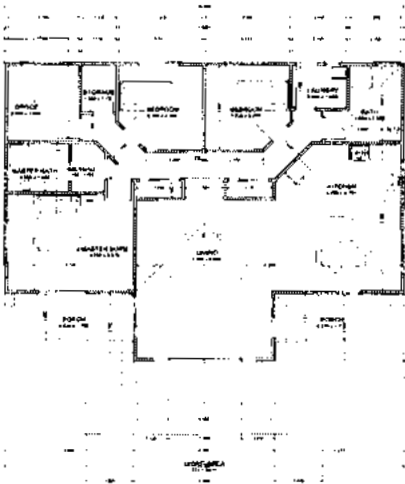
CLASSIC COUNTRY-STYLE COMFORT

Creating beautiful timber homes which ooze charm and warmth is what Classic Country Cottages does best

Classic Country Cottages offers a range of cottages, romantic timber homes, beach houses and other special designs which can be built to suit your own budget, ideas and taste. Classic Country Cottages can help you work on various designs for your new home, or you can leave it all up to them. It may be that you wish to recapture the atmosphere of a special

holiday destination — a tropical Fijian resort or a traditional Balinese bungalow — or keep with the design of a traditionally handcrafted home including today's modern conveniences. A complete design service is available, as well as the company's standard range of homes. Staff work with clients to modify designs to take into account sites, slopes and family size.

Founded on a wealth of experience in the building industry, Classic Country Cottages developed its home designs after considering the needs and preferences of previous clients. A seven-year guarantee is offered on all homes and a variety of building stages are available for purchase, from lock-up to semi-lock-up, completion to semi-completion.



Woodcutter's Elbow

This classic Australian home draws its inspiration from the old sheep station homesteads but has the modern conveniences and open-plan living of today's finest residences. The magnificent single-storey home is practical, versatile and comfortable and is ideal for acreages or wide frontage sites.

It offers plenty of storage and space, with four bedrooms, a master with ensuite and walk-in robe, and an open-plan kitchen, living and dining area. Cathedral ceilings in the living section feature dressed oregon rafters and



pine lining. The home has hardwood windows and door sliders, which can be upgraded to French doors as in the home featured.

Huge covered decks are an impressive feature of the home and can be accessed from the master bedroom, living and dining areas. The decking is made from 15-centimetre (six-inch) mixed hardwood planks.

The roof is fully insulated Colorbond steel and the exterior can be finished with a number of different claddings,

including 'convict wash' brick veneer, or Hardie's Heritage range.

Interior finishes can be upgraded to T&G flooring or 15-centimetre (six-inch) hardwood planks to match the deck. Architrave and skirting is Colonial Mould hardwood and the doors are finished with antique brass furniture.

The size of the home, roof pitches and deck areas are all easily modified to suit.

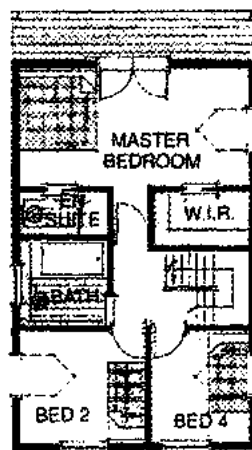
Price: Please refer to the current pricing guide on the website.



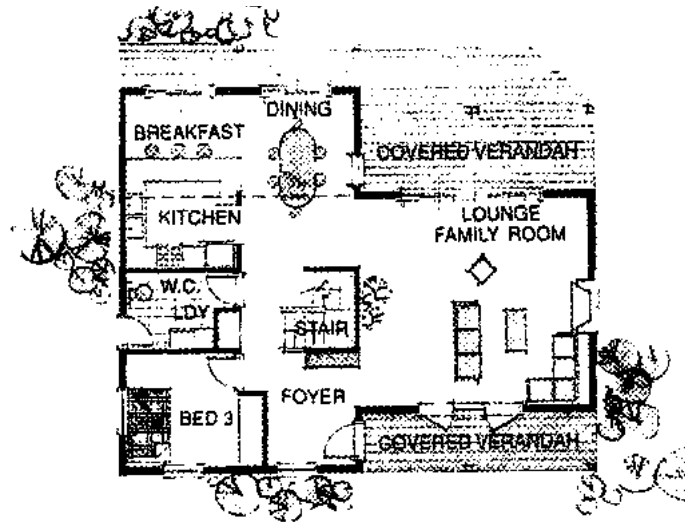
Woodcutter's Elbow



Woodcutter's Elbow



UPPER FLOOR PLAN



The Modified Beechwood

With a little imagination, you can modify the Beechwood to create your special dream home.

This beautiful home features a classic cedar exterior, mint-green interior walls, dark-stained timber dado rails, hardwood mouldings and picture rails, which give the interior a turn-of-the-century feel while still maintaining the large open-plan living areas.

The Beechwood features four bedrooms, bathroom and ensuite and large open-plan kitchen, living and dining areas. The extra-wide and exposed maple staircase allows anyone upstairs to take in the view through the cathedral ceilings and through the picture windows. Double-size dormer windows with hardwood double-hung windows and massive four-panel hardwood sliding doors

attract attention, as do the stunning full-length 'comfort tone' glass windows at the gable end of the home to capture views and northern light, as in the home featured.

Mixed hardwood has been used for the flooring and decks, while dado rails feature throughout. A convenient double carport is also included in the design.

Price: Refer to the current pricing guide on the website.

Details

CLASSIC COUNTRY COTTAGES

Phone: (02) 4352 1189

Fax: (02) 4352 1198

Website:

www.classiccountrycottages.com.au

Builds homes in NSW and Vic, distributes Australia-wide Beach houses and special designs now available at

www.classiccountrycottages.com