



## The Castlemaine

4 bedroom 2 Living 3.5 bathroom\*

This version of this another Classic quality home design features Four bedrooms two living area with large deck areas. Other bedroom options are also available.

### Built with timeless design & appeal ...

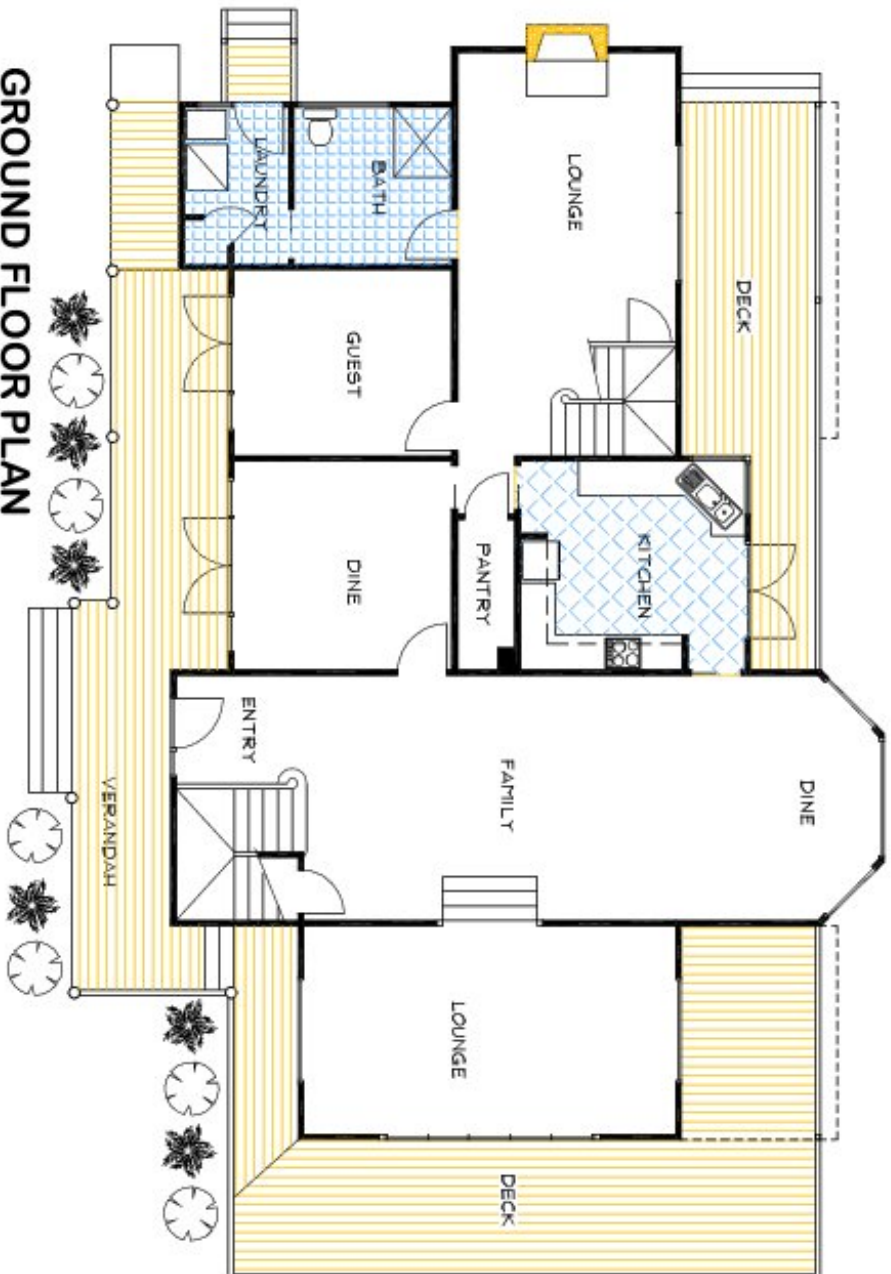
The Castlemaine was designed as a home with expanded views in mind. A major feature of The Castlemaine is its vast use of decks and balconies, promoting stylish outdoor living and entertaining with ease, accessible from the dining, family and living areas.

Upstairs features large open cathedral ceilings lined with gyprock or dressed timber rafter beams and timber lining boards to enhance the ambience. The ensuite features a double shower and custom vanity and both the master and second bedroom flow through French doors onto private balconies.

The main living area of The Castlemaine features a large glazed area adjoining the entertaining decks with the kitchen opening via a servery to the family room. The dining room sits within the bay window, with the option of colonial, heritage or stand glazed windows on all sides. A sliding door from the dining room allows dinner guests to access the decks. A truly fantastic home for entertaining.



*\*The floorplans shown demonstrate some of the options available in terms of layout, possible size, possible number of rooms, decks and more. They are a guide, and are meant to provide you with ideas and show you possibilities. Any of the basic designs can be customised to suit any of your requirements.*

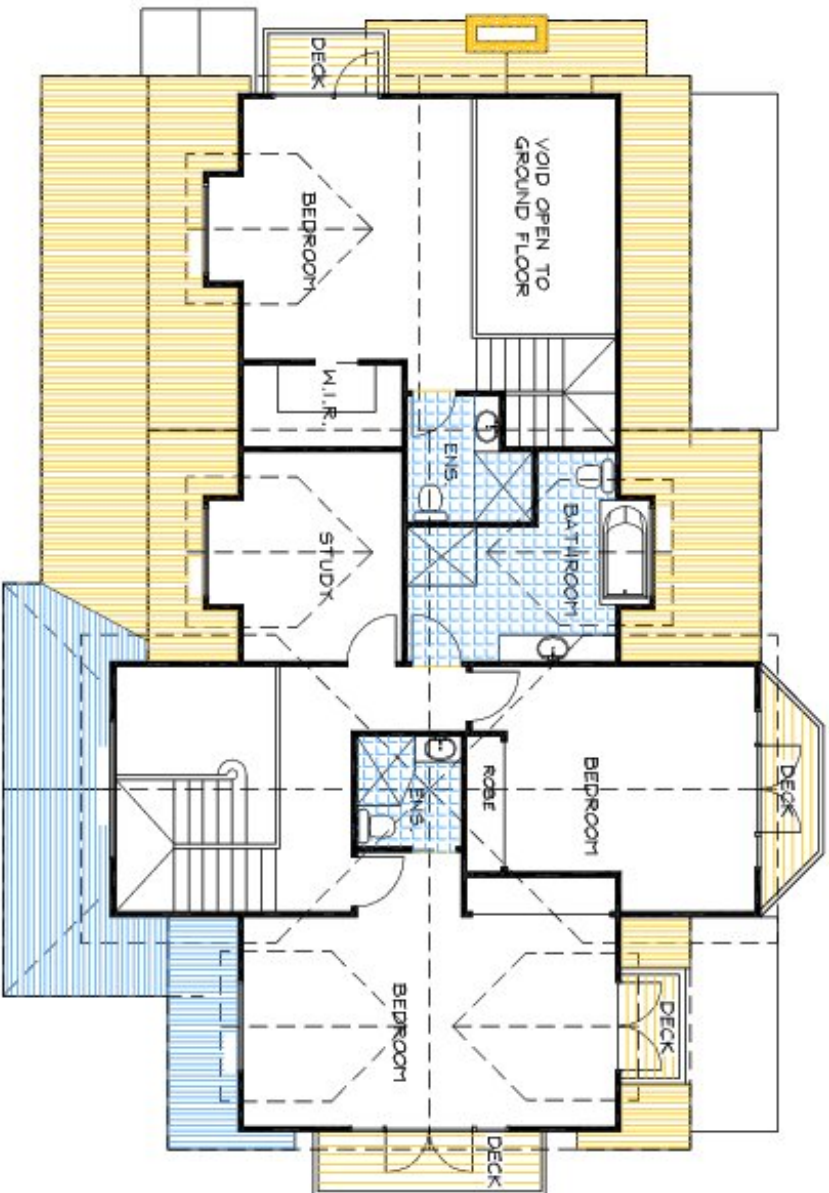


**GROUND FLOOR PLAN**  
**© CLASSIC BUILDING & DESIGN**

\*PLEASE NOTE ROOM DIMENSIONS ARE NOT DISPLAYED AS WE CUSTOMISE THE HOME TO SUIT YOUR REQUIREMENTS

THE  
**CASTLEMAINE**

© This drawing and design remain the property of CLASSIC BUILDING & DESIGN and may not be copied in whole or in part without prior approval of CLASSIC BUILDING & DESIGN



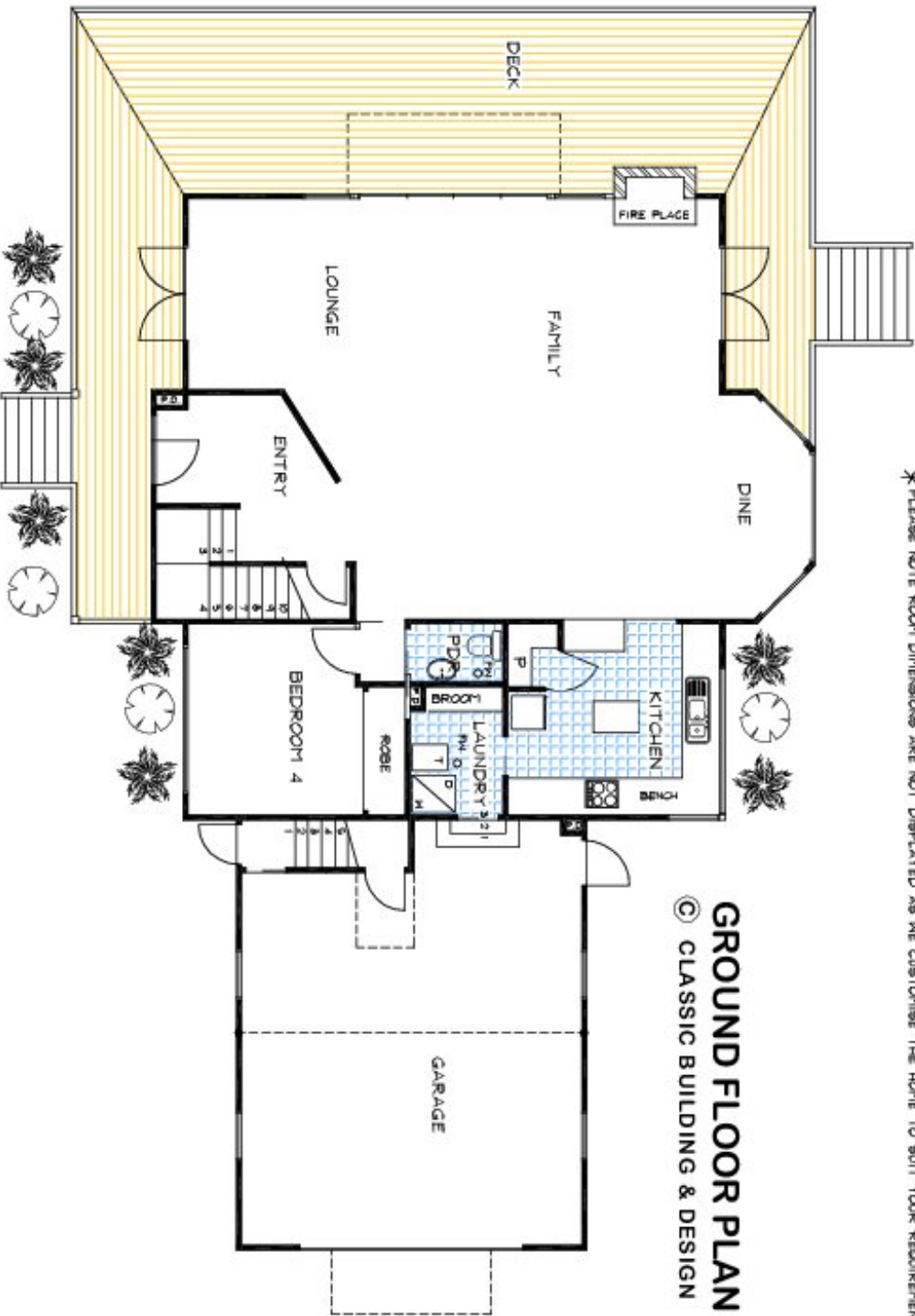
**FIRST FLOOR PLAN**  
 © CLASSIC BUILDING & DESIGN

\* PLEASE NOTE ROOM DIMENSIONS ARE NOT DISPLAYED AS WE CUSTOMISE THE HOME TO SUIT YOUR REQUIREMENTS

THE  
**CASTLEMAINE**

© This drawing and design remain the property of Classic Building & Design. It is not to be copied, reproduced or used in whole or in part without prior approval of Classic Building & Design.

\* PLEASE NOTE ROOM DIMENSIONS ARE NOT DISPLAYED AS WE CUSTOMISE THE HOME TO SUIT YOUR REQUIREMENTS



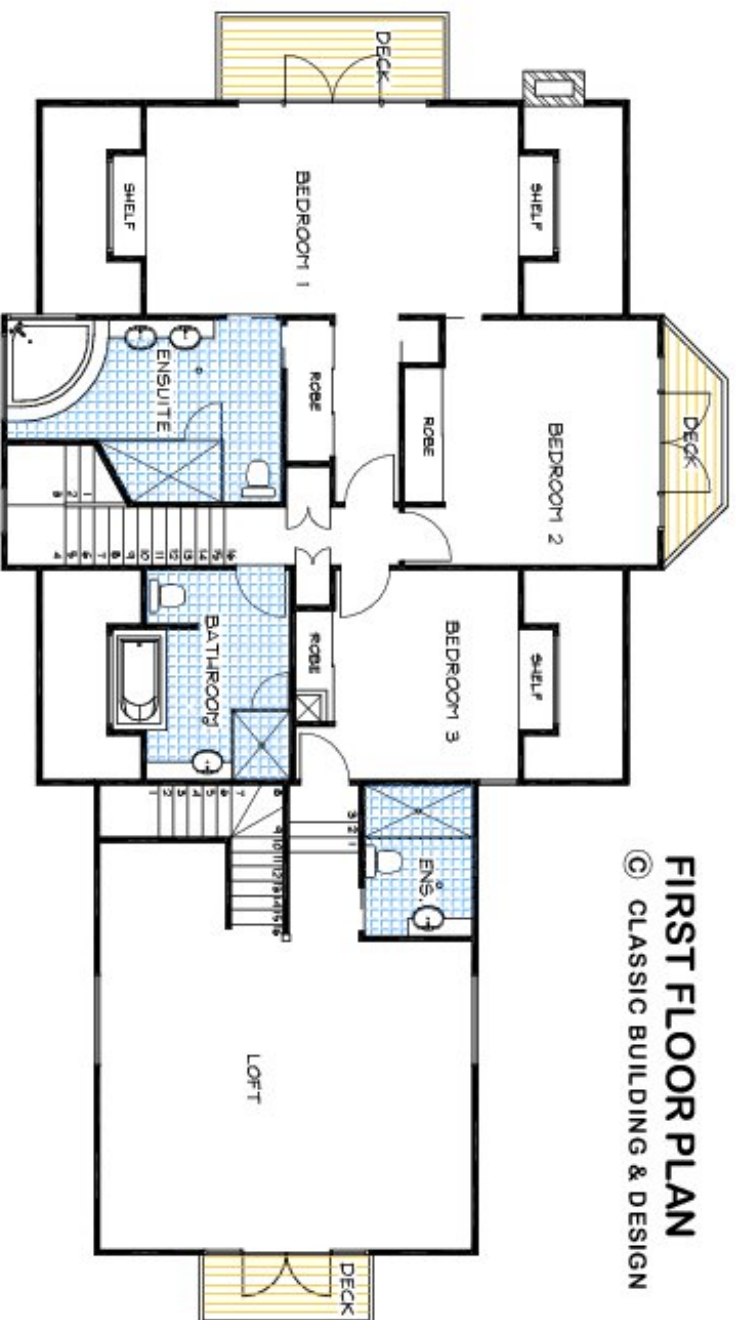
## GROUND FLOOR PLAN

© CLASSIC BUILDING & DESIGN

THE CASTLEMARINE MODIFIED 02

© This drawing and design remain the property of Classic Building & Design and may not be used in whole or in part without prior approval of Classic Building & Design

\* PLEASE NOTE ROOM DIMENSIONS ARE NOT DISPLAYED AS WE CUSTOMISE THE HOME TO SUIT YOUR REQUIREMENTS



**FIRST FLOOR PLAN**  
© CLASSIC BUILDING & DESIGN

THE  
**CASTLEMAINNE MODIFIED 02**

© This drawing and design remain the property of  
CLASSIC BUILDING & DESIGN and may not be copied  
in whole or in part without prior approval of  
CLASSIC BUILDING & DESIGN