



The Seaforth Modified 02

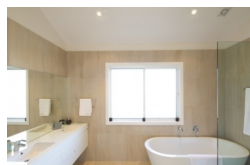
3-4 Bedroom*

This Hamptons meets Australiana home features three bedrooms plus large study, three living areas and large deck areas.

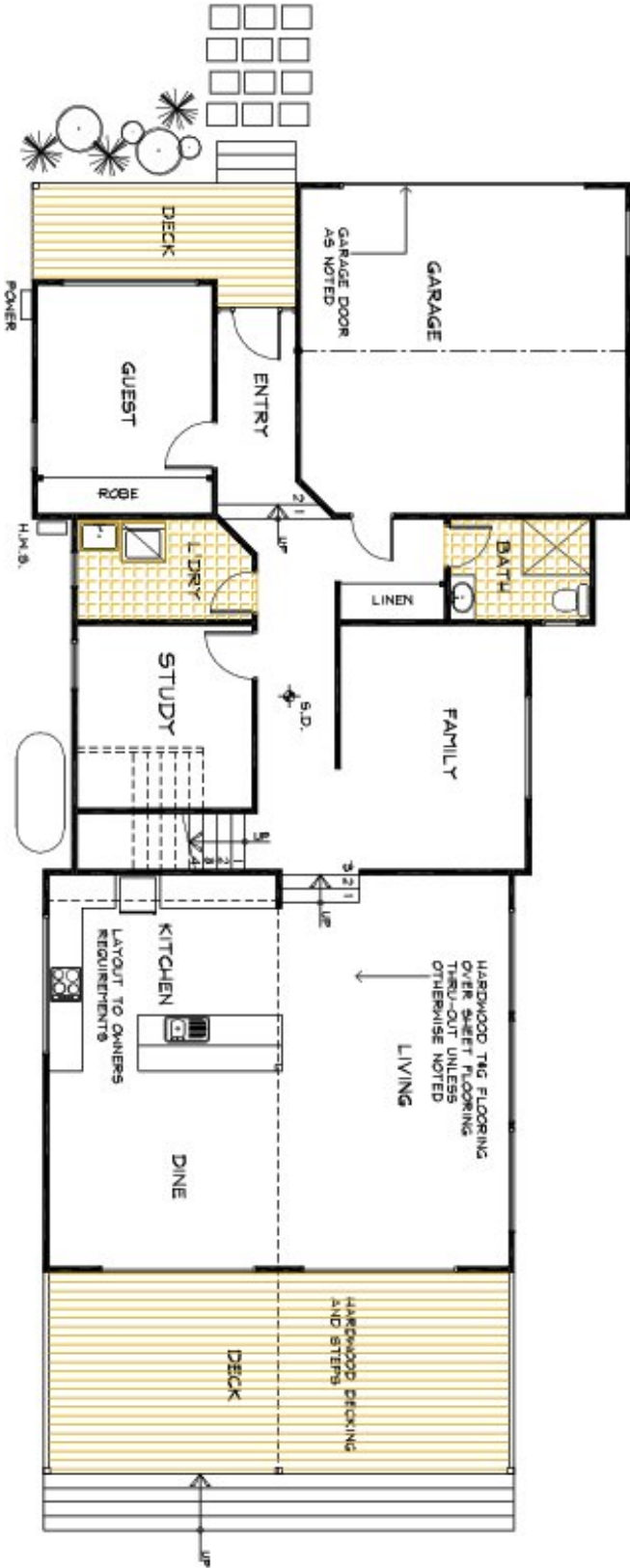
This spectacular design from Classic Building

.... could quite easily be at home on a coastal location or sprawling rural outlook. As with all of Classic's homes, the Modified Seaforth includes flexibility and design and has produced an outstanding result.

Articulated building and roof lines, wide hallways and entry are stand-out features of this magnificent residence. Exceptionally large, open living areas with high, flat and cathedral ceilings complement a double-glazed skylight, enhancing the appearance of the home and achieving a high level of natural light and warmth. Every space in the home was thought about and used carefully by the contemporary home builders, Classic Building.



**The floorplans shown demonstrate some of the options available in terms of layout, possible size, possible number of rooms, decks and more. They are a guide, and are meant to provide you with ideas and show you possibilities. Any of the basic designs can be customised to suit any of your requirements.*

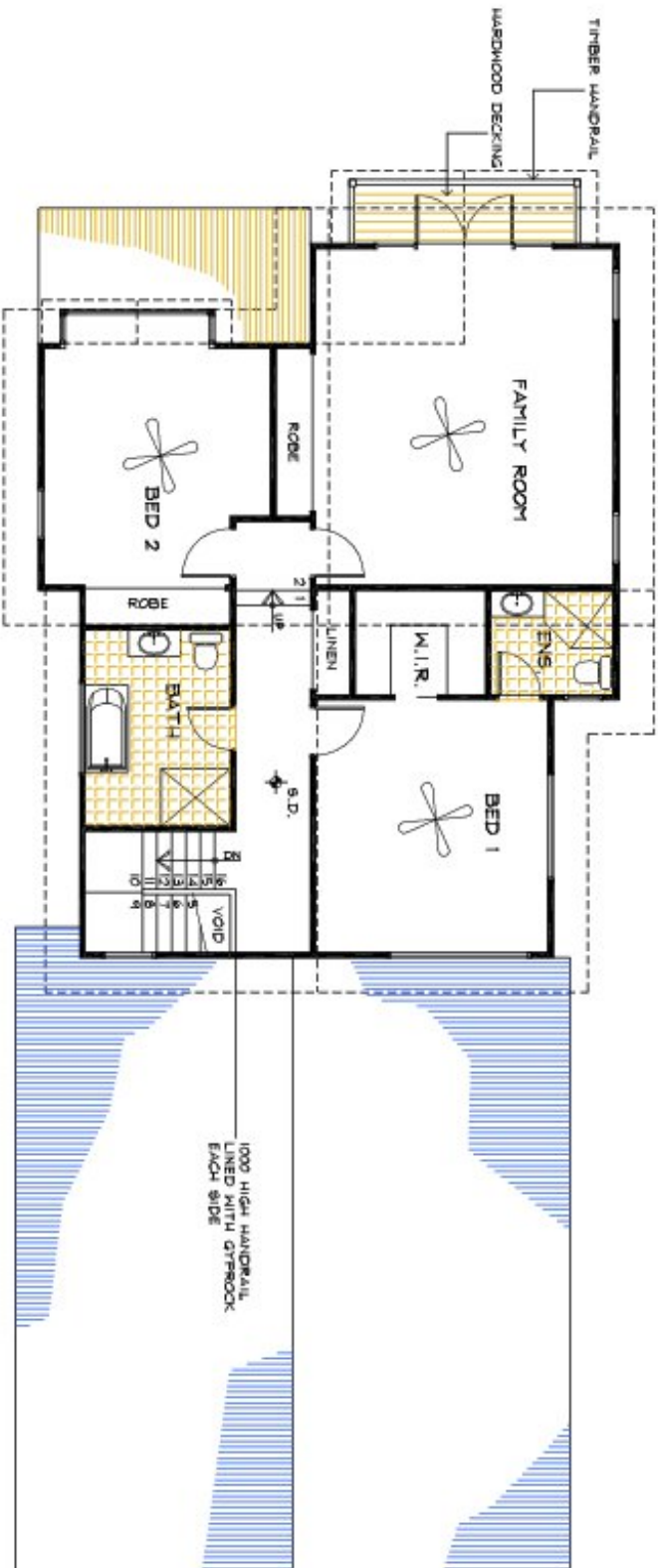


*PLEASE NOTE ROOM DIMENSIONS ARE NOT DISPLAYED AS WE CUSTOMISE THE HOME TO SUIT YOUR REQUIREMENTS

GROUND FLOOR PLAN
 © CLASSIC BUILDING & DESIGN

THE SEAFORTH MODIFIED 02

© This drawing and design remains the property of Classic Building & Design. It is not to be used or to part without prior approval of Classic Building & Design.



* PLEASE NOTE ROOM DIMENSIONS ARE NOT DISPLAYED AS WE CUSTOMISE THE HOME TO SUIT YOUR REQUIREMENTS

FIRST FLOOR PLAN
 © CLASSIC BUILDING & DESIGN

THE SEAFORTH MODIFIED 02

© This drawing and design remains the property of CLASSIC BUILDING & DESIGN and may not be copied in whole or in part without prior approval of CLASSIC BUILDING & DESIGN