



The Berrima

4 Bedroom, 2 Living, 2 Bathroom*

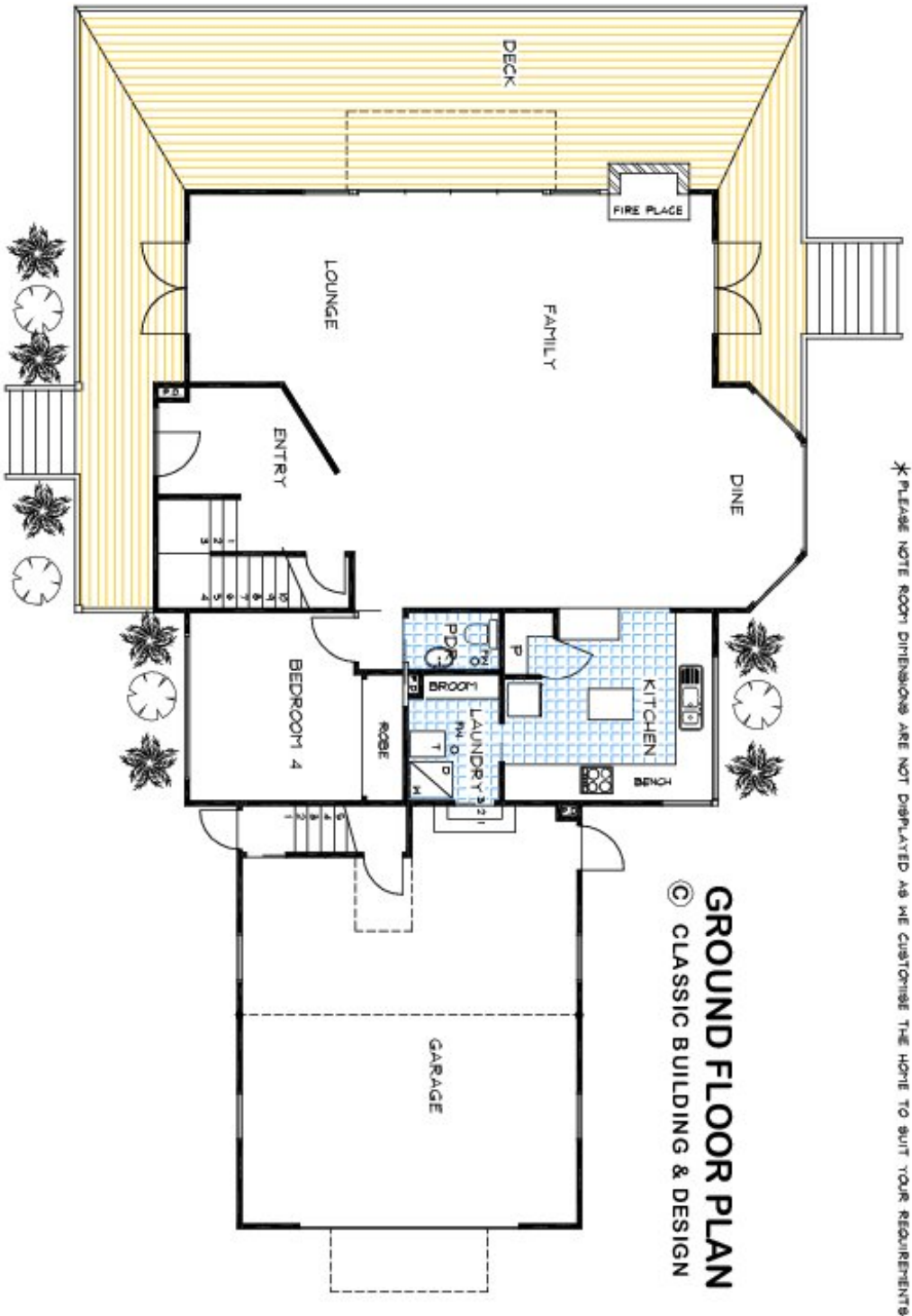
This version of this Classic Australian design features Four bedrooms two living area with large deck areas. Other bedroom options are also an option.

This outstanding Classic Australian home is practical, adaptable and comfortable, emanating character.

There are many different features in this stylish country home including wide verandahs, an attractive portico entry and distinctive full dormer windows. The rear view shows a constant roof line, giving the home a different, but equally attractive appearance from that angle. The unique floor plan allows extensive outdoor areas, creating a seamless transition for entertaining or relaxing on the deck. This versatile home still provides 4 bedroom accommodation and large open living and can be tailored to many different alternative sites and requirements.



**The floorplans shown demonstrate some of the options available in terms of layout, possible size, possible number of rooms, decks and more. They are a guide, and are meant to provide you with ideas and show you possibilities. Any of the basic designs can be customised to suit any of your requirements.*



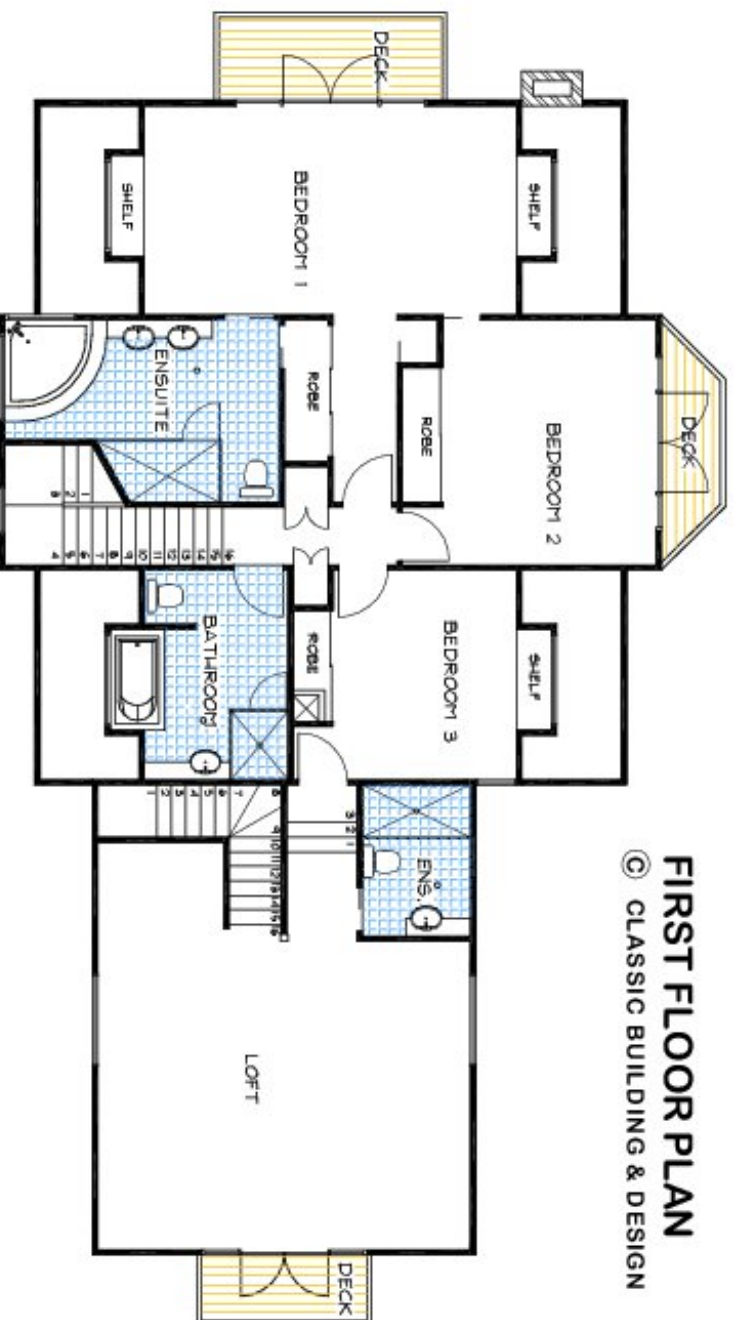
* PLEASE NOTE ROOM DIMENSIONS ARE NOT DISPLAYED AS WE CUSTOMISE THE HOME TO SUIT YOUR REQUIREMENTS

GROUND FLOOR PLAN
 © CLASSIC BUILDING & DESIGN

THE
CASTLEMAINE MODIFIED 02

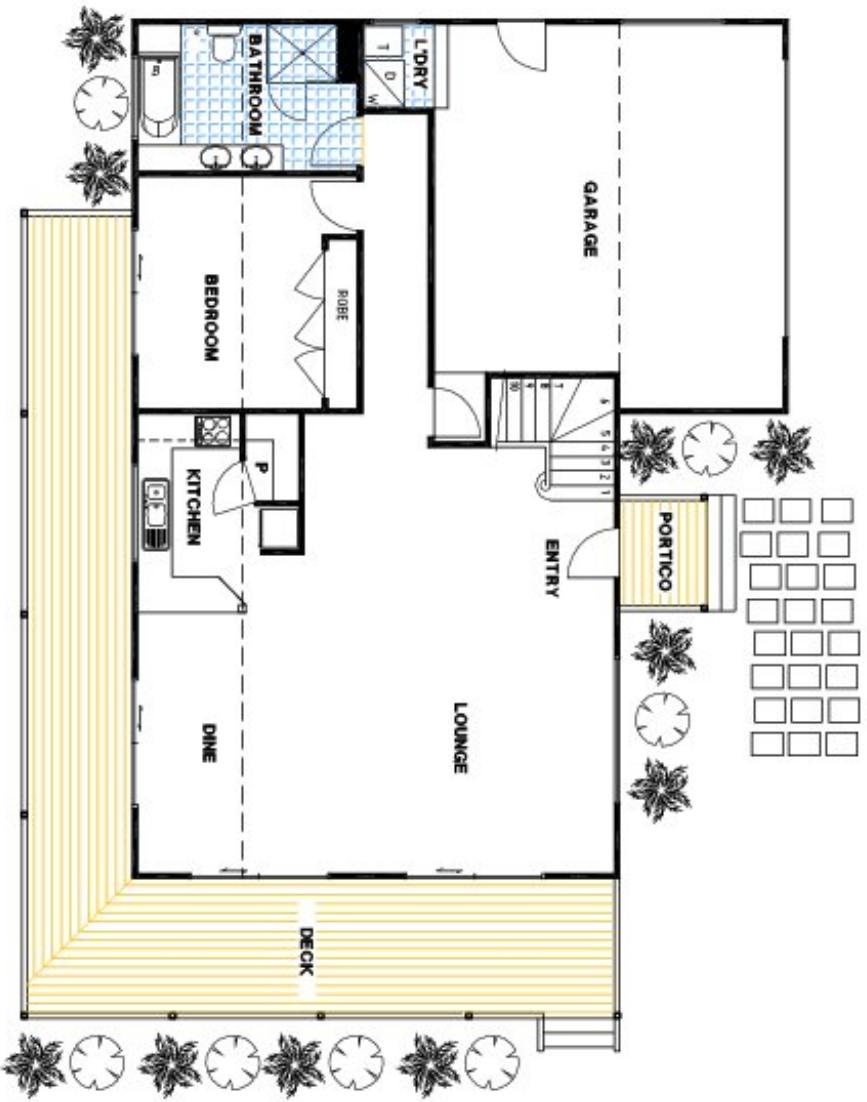
© This drawing and design remains the property of Classic Building & Design and may not be copied in whole or in part without prior approval of CLASSIC BUILDING & DESIGN

* PLEASE NOTE ROOM DIMENSIONS ARE NOT DISPLAYED AS WE CUSTOMISE THE HOME TO SUIT YOUR REQUIREMENTS



THE
CASTLEMACHINE MODIFIED 02

© This drawing and design remain the property of
CLASSIC BUILDING & DESIGN and may not be copied
in whole or in part without prior approval of
CLASSIC BUILDING & DESIGN

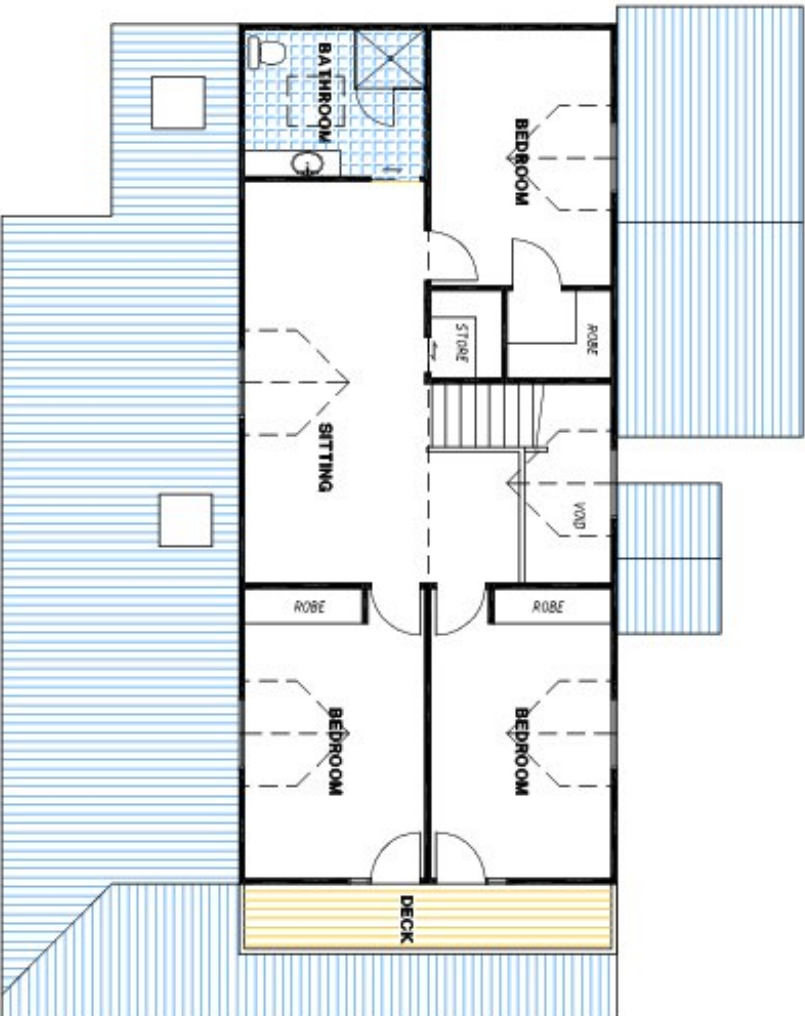


*PLEASE NOTE ROOM DIMENSIONS ARE NOT DISPLAYED AS WE CUSTOMISE THE HOME TO SUIT YOUR REQUIREMENTS

GROUND FLOOR PLAN
 © CLASSIC BUILDING & DESIGN

THE **BERRIMA MODIFIED 02**

© This drawing and design remain the property of Classic Building & Design and may not be copied or used in any way without prior approval of Classic Building & Design



* PLEASE NOTE ROOM DIMENSIONS ARE NOT DISPLAYED AS WE CUSTOMISE THE HOME TO SUIT YOUR REQUIREMENTS

FIRST FLOOR PLAN
 © CLASSIC BUILDING & DESIGN

THE
BERRIMA MODIFIED 02

© This drawing and design remains the property of
 CLASSIC BUILDING & DESIGN and may not be copied
 or reproduced in any form without the written
 consent of CLASSIC BUILDING & DESIGN