



The Bayview

4 Bedroom, 2 Bathroom*

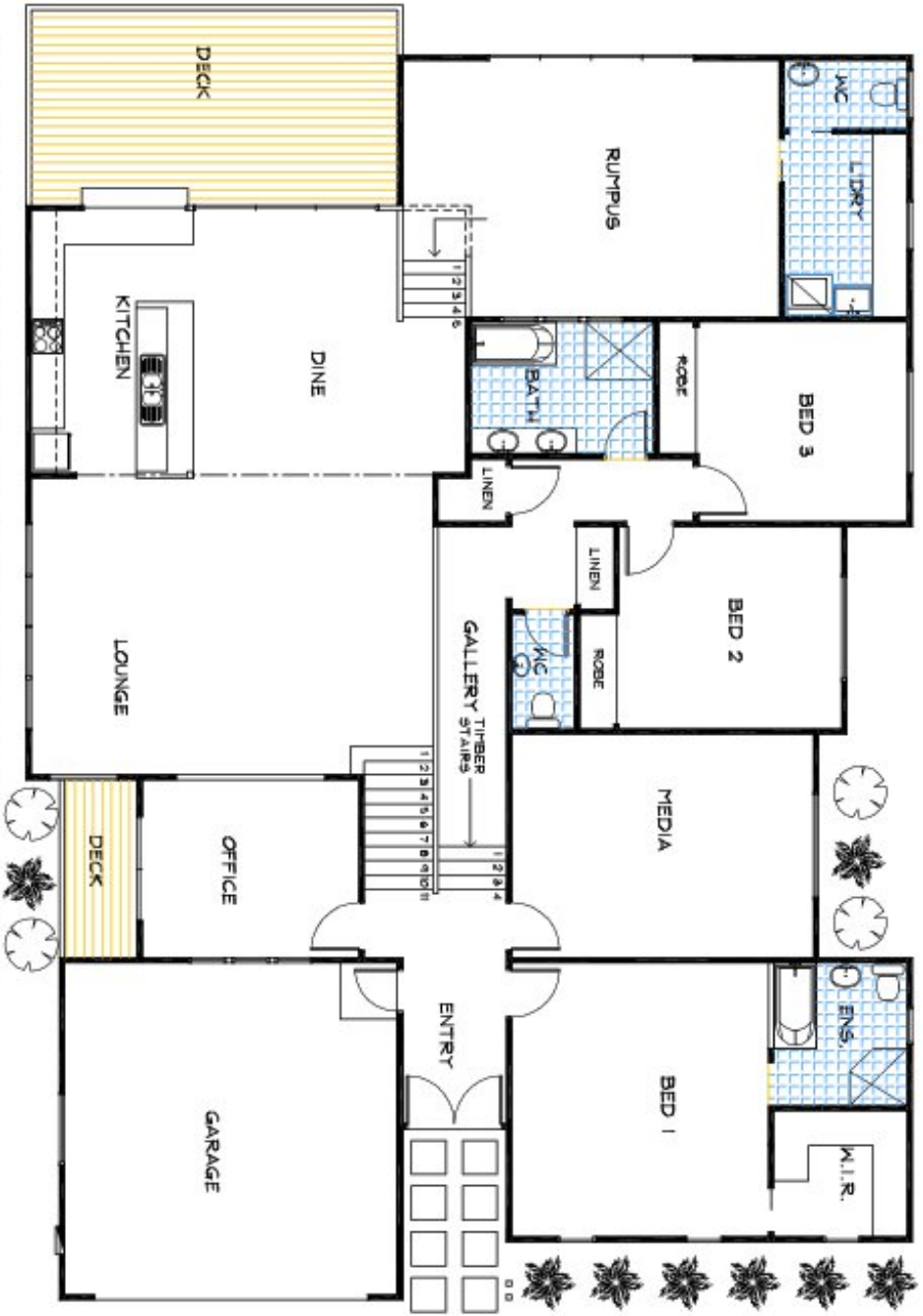
This Modern custom home design features four bedrooms plus large study, two living areas and large deck areas.

This home incorporates passive thermal comfort design elements built into its modern architecture with timeless design.

As the saying goes looks can be deceiving; a surprisingly large split-level home, featuring 4 bedrooms, separate study, two living areas & expansive deck for the entertainer. This home was specifically tailored to suit the sloping site, with very high, low pitched single plain roof lines & hi-light windows. This home incorporates modern architecture with timeless design & appeal. Classic Building has designed a home that is both functional & spacious with every space in the home having been utilized & carefully thought about. What has been created is a home that is relaxed, welcoming & yet striking in its details.



**The floorplans shown demonstrate some of the options available in terms of layout, possible size, possible number of rooms, decks and more. They are a guide, and are meant to provide you with ideas and show you possibilities. Any of the basic designs can be customised to suit any of your requirements.*



* PLEASE NOTE ROOM DIMENSIONS ARE NOT DISPLAYED AS WE CUSTOMISE THE HOME TO SUIT YOUR REQUIREMENTS

GROUND FLOOR PLAN
© CLASSIC BUILDING & DESIGN

THE
BAYVIEW

© The drawing and design represent the property of Classic Building & Design. No part of this drawing may be reproduced or transmitted in any form or by any means, electronic, mechanical, photocopying, recording, or by any information storage and retrieval system, without the prior written permission of Classic Building & Design.